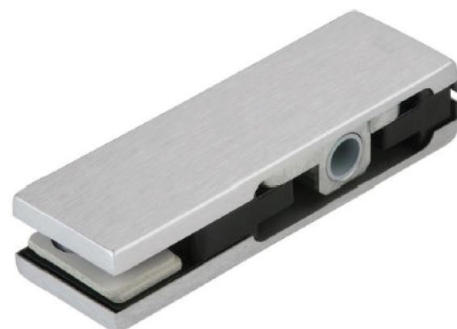


Incarcare dinamica maxim 80 kg
Latime usa sticla maxim 1100 mm
Inaltime usa sticla maxim 2500 mm
Grosime sticla 10-12 mm

Testat in conformitate cu DIN EN 1154
pentru 200.000 de cicluri de utilizare



PT20 - dimensiuni de gabarit si detalii prelucrare sticla

